



CDF[®] Monitor Vessels

EI 1596 1st Edition Monitor

Specification Qualified

HM Series

Compact Monitor Vessels Assure Clean, Dry Fuel Delivery

DESCRIPTION

The Velcon CDF Monitor Vessels, equipped with the CDF[®] Cartridges, provide superior performance and reliability for assuring clean, dry fuel. These vessels are for use downstream of filter/separators or on refueler trucks.

The presence of water and/or dirt in the influent fuel is indicated by an increase in the pressure differential (or a decrease in flow rate if the monitor housing is not equipped with a differential pressure gauge). These changes are the result of flow restriction caused by dirt filtration or water absorption in the media. The rapidity of these changes will depend on the quantity of water or contaminant present.



HM1030M150

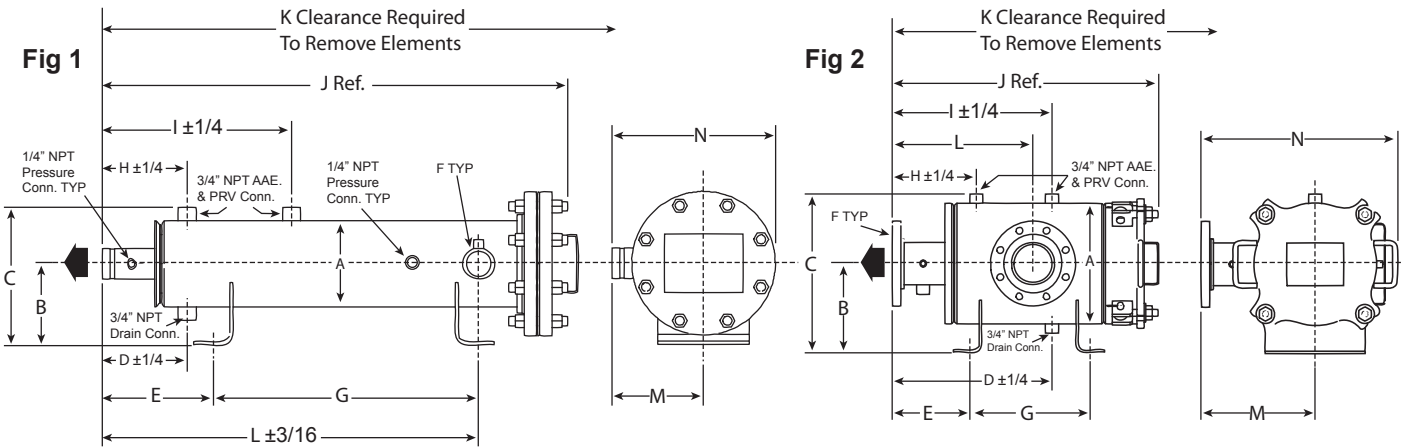
FEATURES

- **Carbon Steel & Lightweight** aluminum construction. Also available in less expensive carbon steel housings with aluminum manifolds.
- **Compact** size minimizes space requirements on mobile refueling equipment, in cabinets, and at loading racks.
- **Qualified** to the Energy Institute's specification for fuel monitors when fitted with CDF[®] Cartridges.
- **Water-absorbing/Flow-restricting** means that additional water defense equipment, such as an electronic water detecting probe or a float control and slug valve, is not needed per EI 1581
- **Rugged Construction** allows the vessel deckplate to exceed the 220 psid hydrostatic test requirement.

SPECIFICATIONS

- 150 psi ASME Code Construction (higher pressures optional)
 - 220 psid hydrotest pressure for deckplate
 - Aluminum or Carbon Steel Construction
 - Buna-N O-Ring cover seal
 - Victaulic or flanged connections (specify one)
 - Spider assembly for stabilizing cartridges
 - Optional Monitor Interlock (see data sheet #1882)
- Standard fittings for:**
- Automatic Air Eliminator
 - Pressure Relief Valve
 - Manual Drain Valve(s)
 - Differential Pressure Gauge
 - Sampling Connections

CDF® Monitor Vessels



HORIZONTAL (MOBILE) CDF® MONITOR VESSELS FIGURES 1 AND 2

Vessel Model Number	Flow Rate		Cartridges		Fig	Dimensions (Inches)													
	US GPM	L/M	Model	Qty		A	B	C	D	E	F	G	H	I	J	K	L	M	N
HM0610M	50	185	CDF-210	5	1	6 ⁵ / ₈	6 ³ / ₁₆	11 ¹¹ / ₁₆	6 ¹ / ₂	8 ¹ / ₂	2	10	6 ¹ / ₂	14 ¹ / ₂	25 ³ / ₈	35	18 ¹ / ₄	7	12 ¹ / ₂
HM0620M	100	375	CDF-220	5	1	6 ⁵ / ₈	6 ³ / ₁₆	11 ¹¹ / ₁₆	6 ¹ / ₂	8 ¹ / ₂	2	20	6 ¹ / ₂	14 ¹ / ₂	36 ³ / ₈	58	28 ⁵ / ₈	7	12 ¹ / ₂
HM0630M	150	565	CDF-230	5	1	6 ⁵ / ₈	6 ³ / ₁₆	11 ¹¹ / ₁₆	6 ¹ / ₂	8 ¹ / ₂	2	30	6 ¹ / ₂	14 ¹ / ₂	46 ⁵ / ₁₆	73	38 ³ / ₈	7	12 ¹ / ₂
HM1210M	200	755	CDF-210	20	2	12 ³ / ₄	9 ³ / ₈	16 ³ / ₄	17	8	4	13	9	17	28 ⁵ / ₁₆	36	15	12	20 ⁵ / ₈
HM1020M	200	755	CDF-220	10	2	10 ³ / ₄	9 ³ / ₈	16 ³ / ₄	18 ³ / ₁₆	8 ⁷ / ₈	4	18	10 ³ / ₁₆	18 ³ / ₁₆	34 ¹ / ₈	53	18 ³ / ₁₆	10	19 ⁹ / ₈
HM1215M	300	1135	CDF-215	20	2	12 ³ / ₄	9 ³ / ₈	16 ³ / ₄	18	8	4	18	10	18	33 ³ / ₁₆	46	18	12	20 ⁵ / ₈
HM1030M	300	1135	CDF-230	10	2	10 ³ / ₄	9 ³ / ₈	16 ³ / ₄	18 ³ / ₁₆	8 ⁷ / ₈	4	28	10 ³ / ₁₆	18 ³ / ₁₆	44 ¹ / ₄	80	18 ³ / ₁₆	10	19 ⁹ / ₈
HM1220M	400	1510	CDF-220	20	2	12 ³ / ₄	9 ³ / ₈	16 ³ / ₄	18	8	4	22	10	18	36	56	14	12	20 ⁵ / ₈
HM1225M	500	1890	CDF-225	20	2	12 ³ / ₄	9 ³ / ₈	16 ³ / ₄	14	8	6	26	10	18	41	67	14	12	20 ⁵ / ₈
HM1230M	600	2270	CDF-230	20	2	12 ³ / ₄	9 ³ / ₈	16 ³ / ₄	18	8	6	28	10	18	46	76	18	12	20 ⁵ / ₈
HM1430M	800	3025	CDF-230	27	2	14	10 ¹ / ₂	18 ¹ / ₂	16	7	6	35	16	26	47 ⁹ / ₁₆	79	24 ⁷ / ₈	11 ³ / ₄	19 ⁷ / ₈
HM1630M	1000	3785	CDF-230	34	2	16	11 ¹ / ₂	20 ¹ / ₂	13 ⁷ / ₁₆	6	6	33	13 ⁷ / ₁₆	23 ⁷ / ₁₆	46 ⁷ / ₈	85	24 ⁷ / ₈	12	22 ⁵ / ₁₆
HM1830M	1200	4540	CDF-230	40	2	18 ¹ / ₄	15 ¹ / ₈	24 ¹ / ₄	8 ³ / ₈	15 ⁷ / ₈	6	21 ¹ / ₂	17 ¹ / ₈	32	49 ¹ / ₂	76	25 ¹ / ₈	14	20 ¹³ / ₁₆

Vessel Model Number	Wt w/Skid Lbs	Volume U.S. Gallons
HM0610M	110	2 ¹ / ₂
HM0620M	135	3 ³ / ₄
HM0630M	158	5
HM1210M	260	12 ¹ / ₂
HM1020M	245	11
HM1215M	265	15
HM1030M	285	15

Vessel Model Number	Wt w/Skid Lbs	Volume U.S. Gallons
HM1220M	265	17 ¹ / ₂
HM1225M	315	20
HM1230M	350	22 ¹ / ₂
HM1430M	405	26
HM1630M	490	41
HM1830M	575	39

VERTICAL VESSELS AVAILABLE. CONSULT THE FACTORY FOR MORE INFORMATION

Velcon products are sold and serviced by a world-wide representative network. To order, contact Headquarters or your LOCAL REPRESENTATIVE:

COMPANY HEADQUARTERS:
 Velcon Filters, LLC
 1210 Garden of the Gods Road
 Colorado Springs, CO 80907-3410
 Phone: 1.800.531.0180 / 1.719.531.5855
 Fax: 719.531.5690
 e-mail: vfsales@velcon.com
 www.velcon.com

MANUFACTURING PLANTS LOCATED AT:
 Colorado Springs, Colorado
 Sylacauga, Alabama
 Henryetta, Oklahoma

OFFICES AND AFFILIATES IN:
 Canada, Germany, Singapore, & Spain



Liquid Filtration
 and Separation
 Specialists

Due to Velcon Filters' continuing product improvement, drawings, specifications and pictures are subject to change without notice.