



# SWIFTKit

## Detect Surfactants in Aviation Jet Fuel

### FEATURES

- **Easy to Use/Rapid Results**  
Test done in the field, no need to wait for lab results.
- **High Degree of Accuracy**  
Repeatability to within  $\pm 3$  dynes/cm when compared to the ASTM D971 ring method.
- **Economical**  
Lowest cost per sample analysis.

### DESCRIPTION

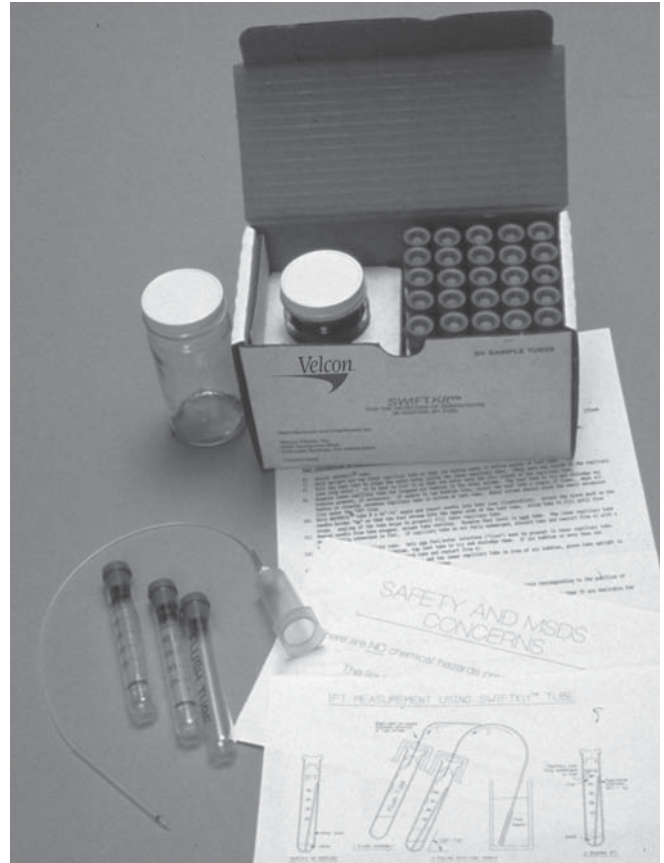
The patented\* *SWIFTKit* is the first practical device to determine the Interfacial Tension (IFT) of aviation jet fuel in the field. The IFT value is a general indication of the surfactant (surface active agent) level in fuel; higher IFT values indicate lower surfactant levels. Surfactants can disarm coalescer elements, which could allow excess water downstream and into the aircraft.

### APPLICATIONS

The *SWIFTKit* can be used for general quality checks on fuel during transfer and transportation, and particularly for receipts into airport storage. The *SWIFTKit* is especially useful to determine the condition of clay treatment cartridges by comparing the upstream and downstream IFT values. An increase in IFT value shows that the clay is still effectively doing its job of removing surfactants.

### ORDERING INFORMATION

- Specify Model SWK1



#### Each SWK1 *SWIFTKit* box includes:

- 20 sample *SWIFTKit* tubes
- 5 flush tubes
- 1 wide mouth glass sample jar
- 1 needle holder assembly
- 1 procedure sheet
- 1 illustration of procedure sheet
- 1 safety and MSDS sheet

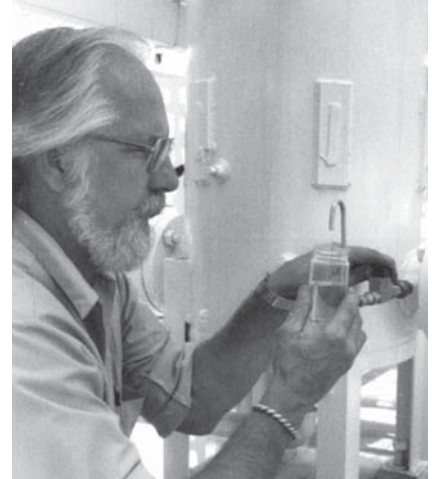
\*U.S. Patent No. 5,305,632.

# How To Use The *SWIFTKit*

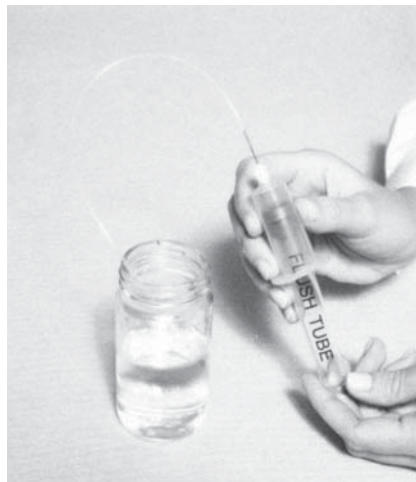
**1**  
Sample bottle must be clean.



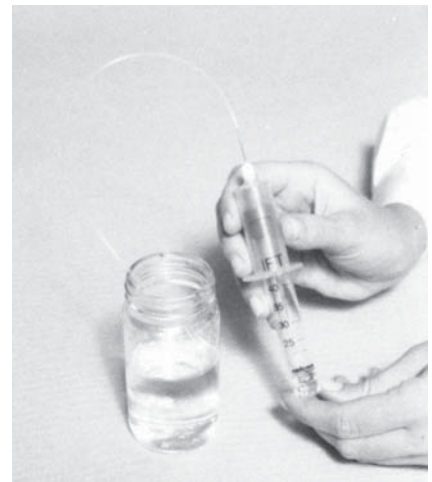
**2**  
Take sample at receipt point; or upstream and downstream of clay vessel.



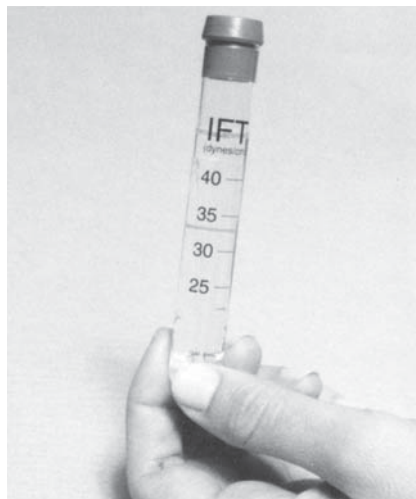
**3**  
Flush the sampling hose assembly using the flush tube.



**4**  
Draw the fuel sample into the SWIFTKit tube. Insure fuel level is above capillary tube.



**5**  
Examine capillary tube to be sure there are no air bubbles.



**6**  
After 4 minutes, read the IFT value corresponding to the fuel/water interface level in the capillary tube.



**Velcon**

Velcon products are sold and serviced by a world-wide representative network. To order, contact Headquarters or your **LOCAL REPRESENTATIVE**:

**COMPANY HEADQUARTERS:**  
Velcon Filters, LLC  
1210 Garden of the Gods Road  
Colorado Springs, CO 80907-3410  
Phone: 1.800.531.0180 / 1.719.531.5855  
Fax: 719.531.5690  
e-mail: [vfsales@velcon.com](mailto:vfsales@velcon.com)  
[www.velcon.com](http://www.velcon.com)

**MANUFACTURING PLANTS LOCATED AT:**  
Colorado Springs, Colorado  
Sylacauga, Alabama  
Henryetta, Oklahoma

**OFFICES AND AFFILIATES IN:**  
Canada, Germany, Singapore, & Spain



**Liquid Filtration  
and Separation  
Specialists**