

## Compact Filter/Separator Vessels for Fixed Installations



### FEATURES

- Compact Design
- Code Qualification
- Simplified Maintenance
- Field Proven Performance

### DESCRIPTION

Units are designed for ease of maintenance with one piece threaded base coalescers and reusable one-piece Teflon® coated screen separators. The 85 Series coalescer cartridges used in most of these vessels have been field proven to give exceptionally long service life.

### SPECIFICATIONS

- 150 psi ASME Code Construction
- RF Flanged Connections
- Swing Bolted Closure
- Buna-N O-Ring Cover Seal
- MIL-PRF-4556 Epoxy Coated Interior, Primed Exterior

### RECOMMENDED ACCESSORIES

The following accessories are recommended for safe, effective operation at all installations.

- Automatic Air Vent
- Pressure Relief Valve
- Differential Pressure Gauge
- Sampling Probes
- Interface Control
- ASME Code Stamp
- Water Slug Control Valve
- Manual Drain Valve

### OTHER ACCESSORIES AVAILABLE

- Sump Heater
- Sight Glass

**NOTE:** These vessels were previously qualified to API 1581 3rd Edition, which has been superseded by API/EI 1581 5th Edition. For vessels qualified to this latest edition, please refer to data sheet #1947.

# CARTRIDGE SELECTION

Velcon Vessel Model No.	Flow Rate (USGPM) <sup>1</sup>		Coalescer Elements			Separator Elements	
	Kerosene API Group II Class B	Gasoline	Qty.	83 Series Options <sup>2</sup>	85/87 Series Options <sup>3</sup>	Qty.	Model Number
V1222	50	70	1	I-62283TB	I-62287TB	1	SO-318C
V1622	100	140	2	I-62283TB	I-62287TB	1	SO-623C
V1633	155	215	2	I-63383TB	I-63387TB	1	SO-629C
VV1633	200	260	3	I-63383TB	I-63387TB	1	SO-436V
VV1833	220	305	3	I-63383TB	I-63385TB	1	SO-633VA
VV1838	270	380	3	I-63883TB	I-63885TB	1	SO-640V
VV2044	300	445	3	I-64483TB	I-64485TB	1	SO-644V
VV2328	335	450	5	I-62883TB	I-62885TB	2	SO-630PV
VV2333	400	540	5	I-63383TB	I-63385TB	2	SO-630PV
VV2338	465	630	5	I-63883TB	I-63885TB	2	SO-636PV
VV2344	540	740	5	I-64483TB	I-64485TB	2	SO-640PV
VV2833	560	760	7	I-63383TB	I-63385TB	3	SO-630PV
VV2838	605	880	7	I-63883TB	I-63885TB	3	SO-630PV
VV2844	765	1035	7	I-64483TB	I-64485TB	3	SO-640PV
VV2856	900	1340	7	I-65683TB	I-65685TB	3	SO-644PV
VV3638	1030	1390	11	I-63883TB	I-63885TB	5	SO-636PV
VV3644	1205	1630	11	I-64483TB	I-64485TB	5	SO-636PV
VV3656	1800	2340	12	I-65683	I-65685	6	SO-644V
VV4856	3000	3900	20	I-65683	I-65685	10	SO-644PV

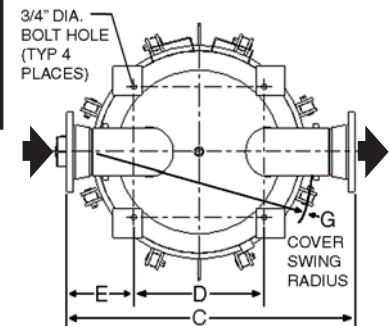
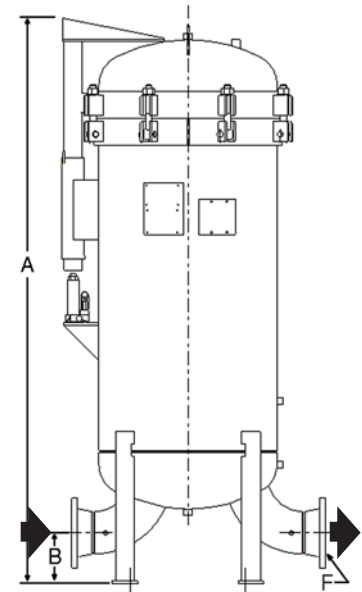
- Based on fuel with minimum interfacial tension of 36 dynes per centimeter over water.
- For gasoline and API 1581, Group I Class B.
- For API 1581 Second and Third Editions, Group II Class B. All "85" Series Coalescers are also available as "87" Series. "87" Series Coalescers are also qualified to API 1581 Third Edition, Group II Class B.

# DIMENSIONAL DATA

Velcon Vessel Model No.	Dimensions (inches) <sup>1</sup>							Weight With Skid (lbs)	Volume (US gal)
	A	B	C	D	E	F	G		
V1222	43 3/4	6	17 1/8	8	4 9/16	1 1/2	No Lift	360	14
V1622	51 3/16	6	22 7/8	9	7 5/16	2 1/2	17 1/2	500	28
V1633	57 5/16	6	22 7/8	9	7 5/16	2 1/2	17 1/2	600	37
VV1633	65 9/16	6	28 1/4	9	9 19/32	4	17 1/2	620	39
VV1833	67 5/8	6	29 3/8	10 1/2	9 13/16	4	23 3/4	700	49
VV1838	68 3/8	6	29 3/8	10 1/2	9 13/16	4	23 3/4	950	54
VV2044	77 3/4	6	29 5/8	13	8 5/16	4	24 3/4	1075	75
VV2328	73 1/2	6	35 1/16	15 1/2	8 9/16	4	29 5/8	1170	85
VV2333	69 1/2	8	36 1/8	15 1/2	9 1/16	6	29 5/8	1170	85
VV2338	76 5/16	8	36 1/8	15 1/2	9 1/16	6	29 5/8	1200	95
VV2344	80 1/2	8	36 1/8	15 1/2	9 1/16	6	29 5/8	1225	100
VV2833	81 1/4	8	37 1/8	18	9 5/8	6	39	1600	155
VV2838	82 9/16	8	37 1/8	18	9 9/16	6	39	1600	155
VV2844	91 9/16	8	37 1/8	18	9 9/16	6	39	1650	170
VV2856	99 15/32	8	37 1/8	18	9 9/16	6	39	1750	200
VV3638	91 1/32	9	52 7/8	24	12 15/16	8	44	2140	300
VV3644	96	9	52 7/8	24	12 15/16	8	44	2150	305
VV3656	110 1/2	9	52 7/8	24	12 15/16	8	44	2300	355
VV4856	114 11/32	9	56 1/2	32	12 1/4	10	57 3/4	3600	656

- V12, V16, VV18, 20, and 23 Series Filter/Separators have flat covers. All other models have domes.
- V12 Series Filter/Separators have no jack. V16 Series Filter/Separators have screw-type jacks. All other models have hydraulic-type jacks.
- VV1633 vessels are built with the float chamber as a standard accessory.

<sup>1</sup> DIMENSIONS SHOWN ARE FOR ESTIMATING PURPOSES ONLY. FOR EXACT DIMENSIONAL DETAIL, OBTAIN CERTIFIED COPY OF VESSEL DRAWING.



Velcon products are sold and serviced by a world-wide representative network. To order, contact Headquarters or your LOCAL REPRESENTATIVE:

**COMPANY HEADQUARTERS:**  
 Velcon Filters, Inc.  
 1210 Garden of the Gods Road  
 Colorado Springs, CO 80907-3410  
 Phone: 1.800.531.0180 / 1.719.531.5855  
 Fax: 719.531.5690  
 e-mail: vsales@velcon.com  
 www.velcon.com

**MANUFACTURING PLANTS LOCATED AT:**  
 Colorado Springs, Colorado  
 Sylacauga, Alabama  
 Henryetta, Oklahoma

**OVERSEAS AFFILIATES:**  
 Frankfurt/M., Germany & Singapore

**Liquid Filtration  
 and Separation  
 Specialists**